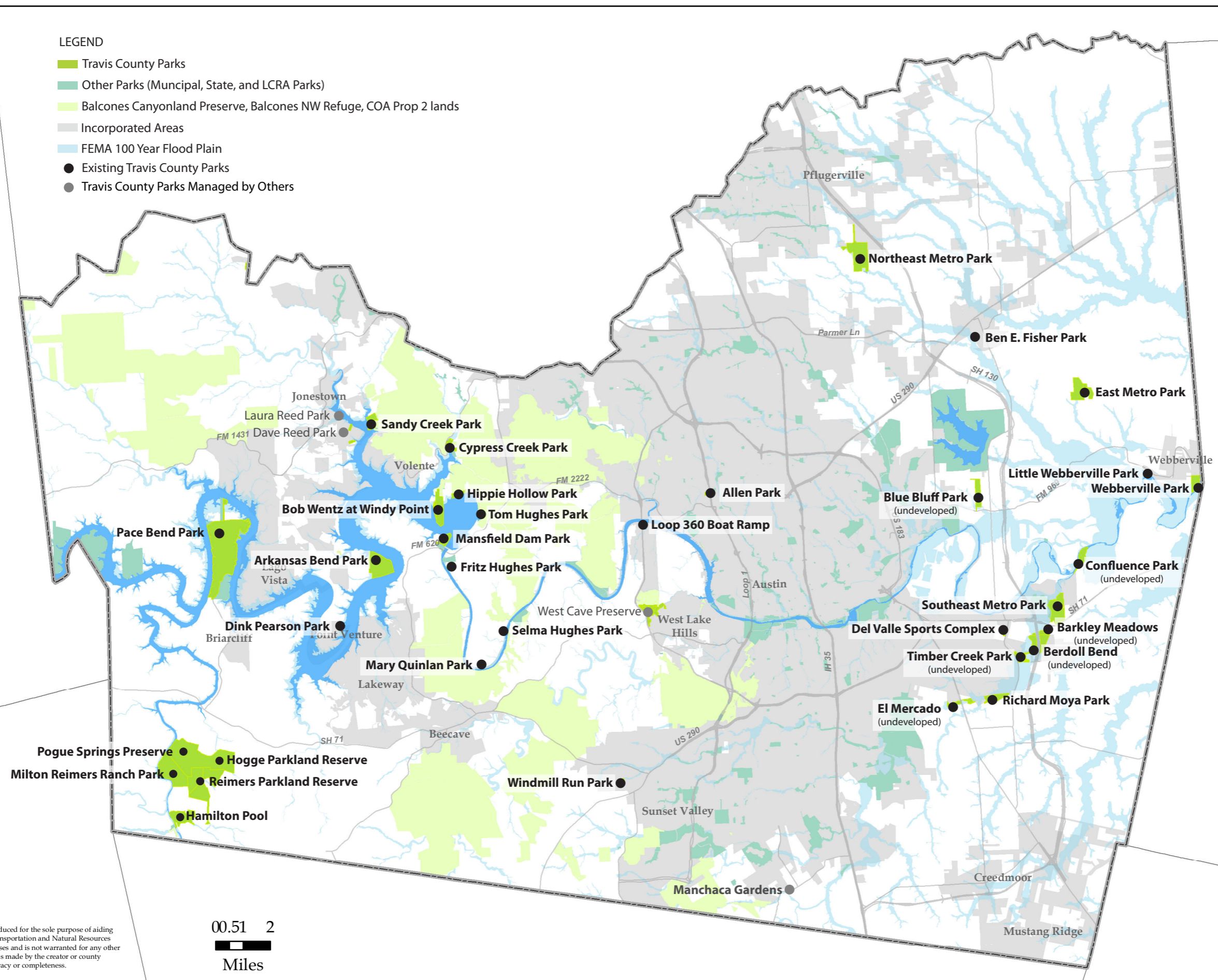
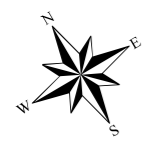


LEGEND

- Travis County Parks
- Other Parks (Municipal, State, and LCRA Parks)
- Balcones Canyonland Preserve, Balcones NW Refuge, COA Prop 2 lands
- Incorporated Areas
- FEMA 100 Year Flood Plain
- Existing Travis County Parks
- Travis County Parks Managed by Others



DISCLAIMER
 This map was produced for the sole purpose of aiding Travis County Transportation and Natural Resources in planning purposes and is not warranted for any other use. No warranty is made by the creator or county regarding its accuracy or completeness.

